

TRUCK AND BUS TIRES

PRODUCT CATALOGUE



E+ PES is an advanced technology unique to EVERGREEN tires that works to enhance key areas of driving experience.



POWER EFFICIENCY SYSTEM



LONGEVITY

EVERGREEN improves tire durability and wear resistance, reduces potential structural risks during use, and maximizes the value of tyres, therefore extending the mileage of the tires and reducing tire replacement expenses. Our tires feature Responsive Stress Distribution Technology (RSDT), High Conductive Frame Structure (HCFS), and Ultra Anti-Wear Tread Formula (UAWTF) for greater longevity.

TOUGHNESS

The outstanding toughness of EVERGREEN tires can assist drivers and truck owners in even the most challenging of work environments, as it was developed with a series specialized features made to withstand severe conditions.

CONTROL

As the only contact area between vehicle and ground, the tire is a of driver control. Using specially developed technologies such as Tread and Shoulder Reinforcement Technology (TSRT), Optimized Contact Area Technology (OCAT), and Uniformity and Dynamic Balance Improve Program (UDBIP), our tires were made to optimize controllability.

GREEN

Sustainability is the core of EVERGREEN. In order to do our part in protecting the earth and lowering fuel consumption, we use Nano Silica Uniformity Tech (NSUT), Evergreen Manufacturing Programs (EMP), Ternary alloy wire (TAWI), a Vulcanizing Activator With Low Zinc Content (VALZ), and Low Hysteresis Carbon Black (LHCB) to reduce our carbon footprint.

SAFETY

Safety is the most important quality of any product. To protect our customers, Evergreen has put in place numerous guidelines to ensure each that EVERGREEN tire is safe. Even in more extreme conditions, our Anti aquaplaning pattern design (AAPD) ensures you safety on wet and icy surfaces.

EVERGREEN, DRIVE TO THE FUTURE

We only have one Earth, and every individual must do their part to in caring for it.

EVERGREEN takes this commitment seriously. The spirit of environmental sustainability is embedded in all the tires we make.

We believe in doing our part to protect the world's limited resources by developing tires in a sustainable, responsible way to ensure the health and wellbeing of our future generations.

SERIES	ICON	APPLICATION
<i>LineRoute</i>		<ul style="list-style-type: none">• Long-range travel with consistent speed and less braking or accelerating.• Well paved road surface with fewer curves.
<i>MultiRoute</i>		<ul style="list-style-type: none">• Journeys with repeated braking, acceleration, and turning.• Well-paved road with curves and occasionally rough conditions.
<i>MixWork</i>		<ul style="list-style-type: none">• Both on and off road with aggressive, uneven, or muddy road conditions.• Heavy loads at medium to slow speeds and frequent stopping.
<i>Coach&Bus</i>		<ul style="list-style-type: none">• Transportation services such as charter, travel, commuting, and shuttle applications.• Handling challenging road conditions, from long highway miles to tough city streets.

LineRoute Series

P.01-P.1



MultiRoute Series

P.09-P.



MixWork Series

P.25-P.36



Coach&Bus

P.37-P.40



The LineRoute Series

- Long-range travel with consistent speed and less braking or accelerating.
- Well paved road surface with fewer curves.



LineRoute ESL01

ESL01 is the latest generation of high-performance steering tire for national and regional operations.



LONGEVITY



SAFETY



GREEN

LineRoute **ESL01**



Features

Advanced silica-rich cap and base compounds

Optimized 5-rib cap design with optimal pressure distribution

Enhanced 4-belt construction design

Increased tread width and contact surface area

Stone ejection system with waved grooves

Benefits

- ▶ Provides longer tire life with excellent fuel efficiency and wet grip
- ▶ Provides good steering stability, high mileage and even wear.
- ▶ Maximum safety and retreadability
- ▶ Extended wear life and mileage potential
- ▶ Eliminates stone retention for extended tire life

Size

Size	PR	UTQG	Tread	Standard Rim	Overall Diameter (mm)	Section Width (mm)	Tread Depth (mm)	Load		Pressure	
								S(kg)	D(kg)	S(kPa)	D(kPa)
11R24.5	16	149/146L	T/L	8.25	1104	279	16.5	3250	3000	830	830
12R22.5	18	152/149L	T/L	9.00	1085	300	17.5	3550	3250	930	930
275/70R22.5	16	148/145M	T/L	8.25	958	275	15	3150	2900	900	900
295/60R22.5	18	150/147L	T/L	9.00	926	295	16	3350	3075	900	900
295/75R22.5	14	144/141L	T/L	9.00	1014	298	16.5	2800	2575	760	760
295/75R22.5	16	146/143L	T/L	9.00	1014	298	16.5	3000	2725	830	830
315/80R22.5	20	156/153L	T/L	9.00	1076	312	16.5	4000	3650	850	850

LineRoute EGT66

EGT66 is a long-haul steer tire with long mileage and fuel efficiency.



LONGEVITY



SAFETY



GREEN



LineRoute EGT66



Features

- Strengthened tread structure
- Anti-wear material
- Optimized pattern design
- UHT steel cord

Benefits

- ▶ Maximizes durability and retreadability
- ▶ Gives the tire excellent anti-wear characteristic
- ▶ Improves drainage and control performance
- ▶ Provides higher strength and rigidity

Size

Size	PR	LI/SS	Type	Standard Rim	Overall Diameter (mm)	Section Width (mm)	Tread Depth (mm)	Load		Pressure	
								S(kg)	D(kg)	S(kPa)	D(kPa)
385/65R22.5	20	160K	T/L	11.75	1070	388	16	4500	/	900	900
385/65R22.5	24	164K	T/L	11.75	1070	388	16	5000	/	930	930

LineRoute EDL12

EDL12 is the drive tire for long haul operations with excellent anti-wear, grip, and durability performance.



LineRoute EDL12



Features

- High rigidity pattern with 3D-sipes design
- Excellent compound formula
- Wide tread blocks
- Well designed W-shape groove

Benefits

- Provides excellent traction and low rolling resistance with lower deformation in rotation
- Promotes great anti-wear and cool-running performance
- Deliver an optimized footprint with even wear performance and extended tire life
- Minimizes stone retention for longer tire life

Size

Size	PR	LI/SS	Type	Standard κmm	Overall Diameter (mm)	Section Width (mm)	Tread Depth (mm)	Load		Pressure	
								S(kg)	D(kg)	S(kPa)	D(kPa)
11R22.5	16	146/143L	T/L	8.25	1059	279	23	3000	2725	830	830
11R24.5	16	149/146L	T/L	8.25	1110	279	23	3250	3000	830	830
295/75R22.5	16	146/143L	T/L	9.00	1020	298	23	3000	2725	830	830

The MultiRoute Series

- Journeys with repeated braking, acceleration, and turning.
- Well-paved road with curves and occasionally rough conditions.



MultiRoute ESR579

ESR579 is designed for handling diverse road conditions with better mileage and durability.



CONTROL



SAFETY



LONGEVITY



MultiRoute ESR579



Suitable



Features

Optimized 5-rib tread design with higher void ratio

Optimized carcass structure

Stone ejection system with waved grooves

Widened tread width design

New casing construction and optimized footprint design

Benefits

- ▶ Provides high mileage and excellent handling
- ▶ Outstanding durability and retreadability
- ▶ Eliminates stone retention for extended tire life
- ▶ Enhances vehicle stability and extends wear life
- ▶ Designed for regular wear delivering excellent mileage performance

Size

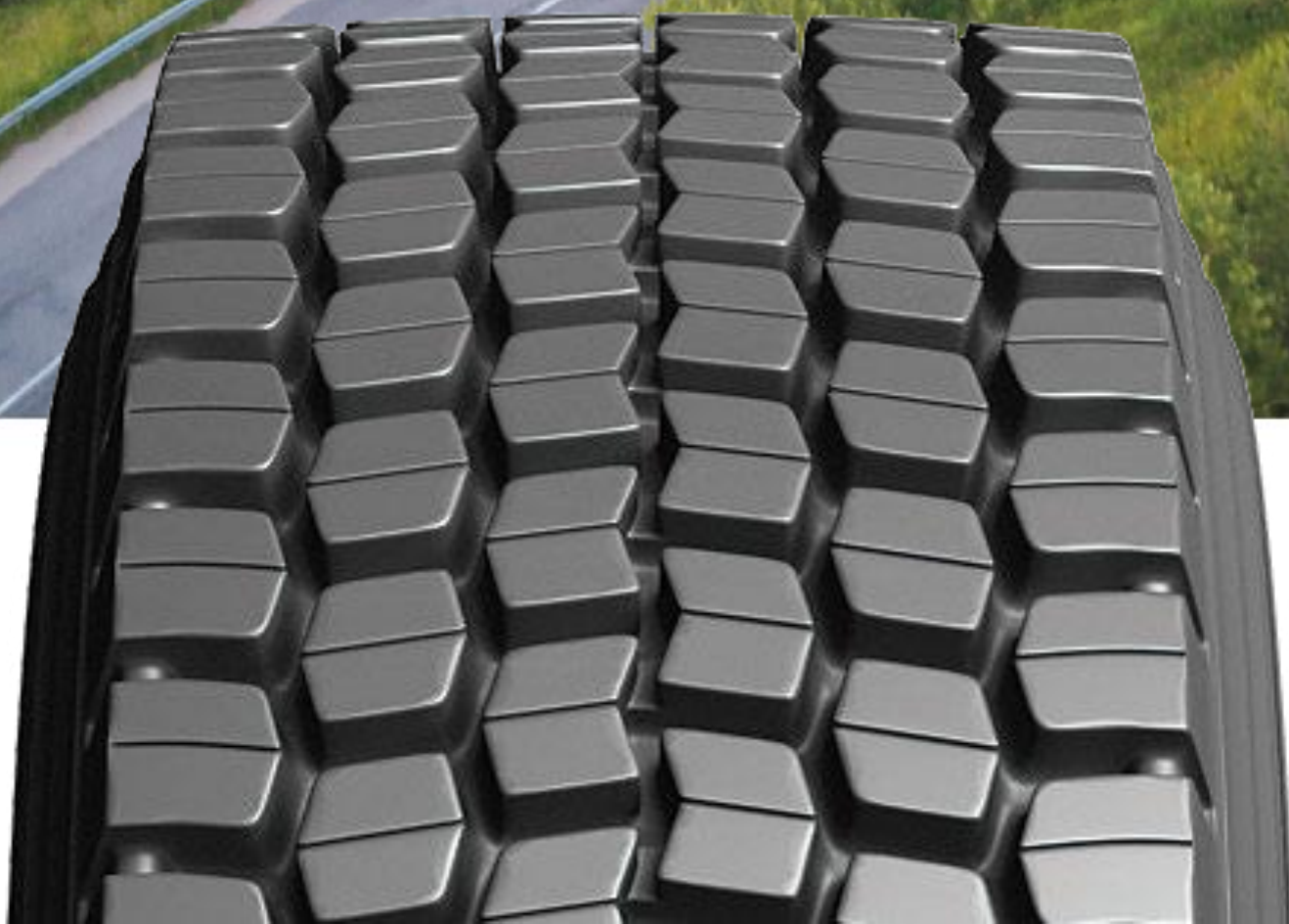
Size	PR	LI/SS	Type	Standard Rim	Overall Diameter (mm)	Section Width (mm)	Tread Depth (mm)	Load		Pressure	
								S(kg)	D(kg)	S(kPa)	D(kPa)
9.5R17.5	18	143/141J	T/L	6.75	842	240	13.5	2725	2575	875	875
12R22.5	18	152/149L	T/L	9.00	1085	300	17	3550	3250	930	930
205/75R17.5	14	124/122M	T/L	6.00	753	205	13	1600	1500	750	750
215/75R17.5	16	135/133L	T/L	6.00	767	211	12.5	2180	2060	860	860
235/75R17.5	18	143/141L	T/L	6.75	797	233	13	2725	2575	860	860
245/70R19.5	18	144/142K	T/L	7.50	839	248	14	2800	2650	900	900
255/70R22.5	16	140/137M	T/L	7.50	930	255	13.5	2500	2300	830	830
265/70R19.5	18	143/141J	T/L	7.50	867	262	13.5	2725	2575	900	900
275/70R22.5	16	148/145M	T/L	8.25	958	276	14.5	3150	2900	900	900
295/80R22.5	18	152/149M	T/L	9.00	1044	298	16	3550	3250	900	900
315/70R22.5	18	156/150L	T/L	9.00	1014	312	15.5	4000	3350	900	900
315/80R22.5	20	156/153L	T/L	9.00	1076	312	16.5	4000	3650	850	850

MultiRoute EG801

EG801 is designed for paved road service applications with better traction and durability.



LONGEVITY SAFETY TOUGHNESS



MultiRoute EG801



Features

- Enhanced carcass structure
- Anti-wear compound formula
- Optimized deep multi-blocks, and tiny kerfs pattern design
- Widened tread width

Benefits

- Improves longevity and enhances retreadability
- Provides high mileage and extends wear performance
- Provides ultra driving force and ensures anti-peeling performance
- Enhances vehicle stability

Size

Size	PR	LI/SS	Type	Standard κmm	Overall Diameter (mm)	Section Width (mm)	Tread Depth (mm)	Load		Pressure	
								S(kg)	D(kg)	S(kPa)	D(kPa)
11R22.5	16	146/143L	T/L	8.25	1065	279	21.5	3000	2725	830	830
12R22.5	18	152/149K	T/L	9.00	1096	300	22.5	3550	3250	930	930
13R22.5	18	154/151K	T/L	9.75	1136	320	23.5	3750	3450	830	830
315/80R22.5	20	156/153L	T/L	9.00	1076	312	24.5	4000	3650	850	850

MultiRoute ETR31

ETR31 is the ideal single fitment choice for paved road service applications thanks to its advanced construction and wide base sizes.



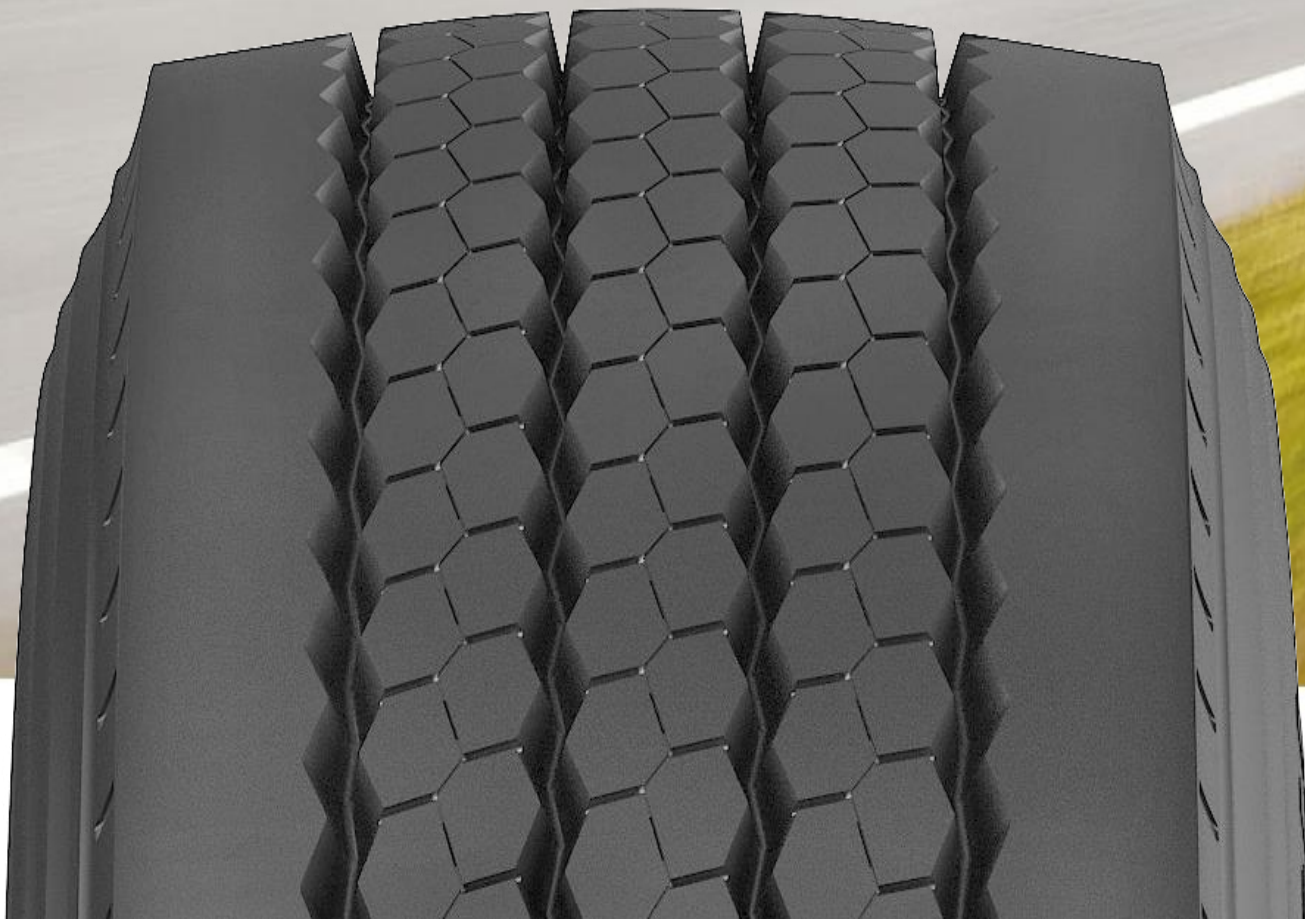
LONGEVITY



SAFETY



GREEN



MultiRoute ETR31



Features

- Optimized wide tread and four-belt design
- Increased tread depth and retengleal footprint
- Enhanced carcass structure
- High conductive cord
- Optimized tread pattern design

Benefits

- ▶ Improves longevity and enhances retreadability
- ▶ Promote even wear and mileage potential
- ▶ Improves irregular wear resistance and retreadability
- ▶ Helps lower rolling resistance and increases fuel efficiency
- ▶ Provides exceptional grip with excellent self-cleaning properties

Size

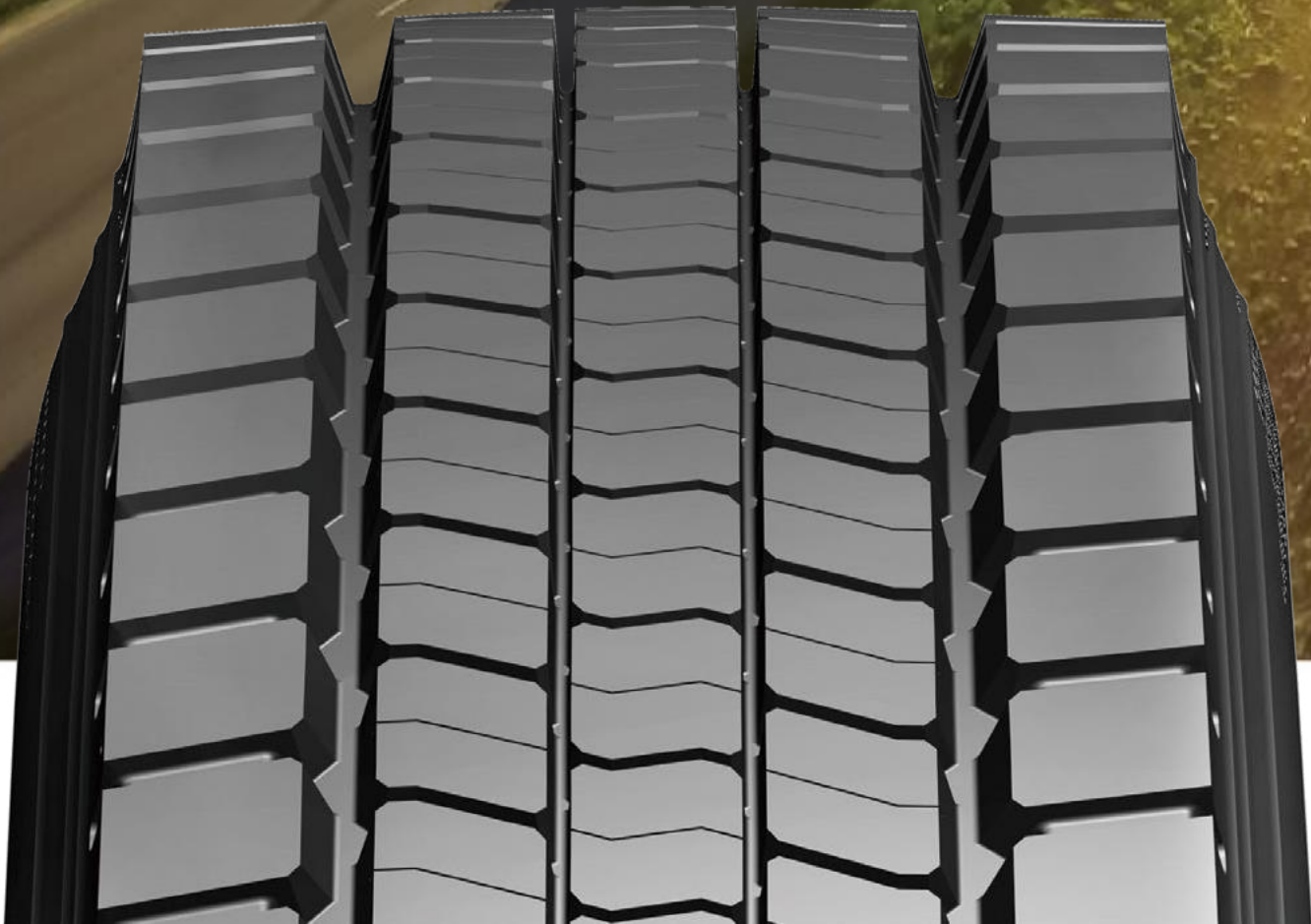
Size	PR	LI/SS	Type	Standard κmm	Overall Diameter (mm)	Section Width (mm)	Tread Depth (mm)	Load		Pressure	
								S(kg)	D(kg)	S(kPa)	D(kPa)
385/65R22.5	20	160/164K	T/L	11.75	1072	385	17.5	4500	/	900	900
385/65R22.5	24	160/164K	T/L	11.75	1072	385	17.5	5000	/	930	930

MultiRoute EDR611

EDR611 is a on-road drive tire with long mileage and longevity.



LONGEVITY SAFETY TOUGHNESS



MultiRoute EDR611



Features

- Enhanced belt construction
- Widened tread width design
- Optimized footprint design
- Optimized carcass structure

Benefits

- ▶ Maximizes durability and retreadability
- ▶ Enhances vehicle stability and extends wear life
- ▶ Designed for regular wear delivering excellent mileage performance
- ▶ Outstanding durability and retreadability

Size

Size	PR	LI/SS	Type	Standard Rim	Overall Diameter (mm)	Section Width (mm)	Tread Depth (mm)	Load		Pressure	
								S(kg)	D(kg)	S(kPa)	D(kPa)
9.5R17.5	18	143/141J	T/L	6.75	842	240	15	2725	2575	875	875
12R22.5	18	152/149K	T/L	9.00	1085	300	19.5	3550	3250	930	930
205/75R17.5	14	124/122 L	T/L	6.00	753	205	15	1600	1500	750	750
215/75R17.5	16	135/133L	T/L	6.00	767	211	15	2180	2060	860	860
235/75R17.5	18	143/141L	T/L	6.75	797	233	15	2725	2575	860	860
245/70R19.5	18	144/142J	T/L	7.50	839	248	16	2800	2650	900	900
265/70R19.5	18	143/141J	T/L	7.50	867	262	15.5	2725	2575	900	900
275/70R22.5	16	148/145M	T/L	8.25	958	276	20	3150	2900	900	900
295/80R22.5	18	152/149L	T/L	9.00	1044	298	22	3550	3250	900	900
315/70R22.5	18	156/150L	T/L	9.00	1014	312	20	4000	3350	900	900
315/80R22.5	20	156/153K	T/L	9.00	1076	312	22.5	4000	3650	850	850



MultiRoute EGT68



- ▶ Modern pattern designed for truck & bus service.
- ▶ An outstanding high speed performance.
- ▶ An excellent anti-wear performance.
- ▶ Straight grooves and S-shaped stripes provide super stability for handling and a good braking and anti-sideslip performance.

Size	PR	LI/SS	T _{vne}	Standard Rim	Overall Diameter (mm)	Section Width (mm)	Tread Depth (mm)	Load		Pressure	
								S(kg)	D(kg)	S(kPa)	D(kPa)
215/75R17.5	16	135/133J	T/L	6.00	767	211	12	2180	2060	865	865
235/75R17.5	18	143/141J	T/L	6.75	797	235	12	2725	2575	900	900
295/80R22.5	18	152/150M	T/L	9.00	1044	298	14.5	3550	3350	850	850
315/80R22.5	20	156/153K	T/L	9.00	1076	312	14.5	4000	3650	850	850



MultiRoute EG902



- ▶ Ultra-strong casing cord prevents the tire from deformation and maximizes the loading ability.
- ▶ A wide tread separates the load press and increases the overall durability.
- ▶ Heat-resistant ingredients in the shoulder help the tire eliminate heat and prolong the tire life.

Size	PR	LI/SS	T _{vne}	Standard Rim	Overall Diameter (mm)	Section Width (mm)	Tread Depth (mm)	Load		Pressure	
								S(kg)	D(kg)	S(kPa)	D(kPa)
11R22.5	16	146/143L	T/L	8.25	1054	279	15.5	3000	2725	830	830
315/80R22.5	20	156/153L	T/L	9.00	1076	312	16	4000	3650	850	850



MultiRoute EGT88



- ▶ Straight simple rib pattern improves even wearing and efficient water drainage for excellent wet traction and handling.
- ▶ Stone ejection design reduces stone retention and casing penetration.
- ▶ Optimized contact tread radius offers a long mileage.
- ▶ A high strength of steel-belt improves casing durability.
- ▶ High cost-performance.

Size	PR	LI/SS	T _{vne}	Standard Rim	Overall Diameter (mm)	Section Width (mm)	Tread Depth (mm)	Load		Pressure	
								S(kg)	D(kg)	S(kPa)	D(kPa)
295/80R22.5	18	152/150M	T/L	9.00	1044	298	15.5	3550	3350	850	850
315/80R22.5	20	156/153L	T/L	9.00	1076	312	14.5	4000	3650	850	850



MultiRoute EG518



- ▶ Optimized toe design and anti-deformation formula decrease the heat generation and increase the overall tire life.
- ▶ Premium 4-belt structure separates the pressure and prevents eccentric-wear effectively.
- ▶ The well-designed pattern makes sure the low noise and high controllability.

Size	PR	LI/SS	T _{vne}	Standard Rim	Overall Diameter (mm)	Section Width (mm)	Tread Depth (mm)	Load		Pressure	
								S(kg)	D(kg)	S(kPa)	D(kPa)
11R22.5	16	148/145M	T/L	8.25	1054	279	15	3150	2900	840	840
12R22.5	18	152/149L	T/L	9.00	1085	300	15	3550	3250	930	930
325/95R24	22	162/160K	T/T	9.00	1228	325	15	4750	4500	850	850



MultiRoute EDR955



- ▶ Optimized shoulder structure improves heat evacuation and enhances durability.
- ▶ Special tread compound increases wear resistance to maximize tire mileage performance.
- ▶ Well-designed pattern gives the tire excellent traction.

Size	PR	LI/SS	Tvne	Standard Rim	Overall Diameter (mm)	Section Width (mm)	Tread Depth (mm)	Load		Pressure	
								S(kg)	D(kg)	S(kPa)	D(kPa)
295/80R22.5	18	152/149M	T/L	9.00	1044	298	22	3550	3250	900	900



MultiRoute EAR539



- ▶ Multi-purpose tire for usage in a wide range of conditions.
- ▶ High resistance against irregular wear for longer mileage.
- ▶ Great durability and retreadability.

Size	PR	LI/SS	Tvne	Standard Rim	Overall Diameter (mm)	Section Width (mm)	Tread Depth (mm)	Load		Pressure	
								S(kg)	D(kg)	S(kPa)	D(kPa)
265/70R19.5	18	143/141J	T/L	7.50	867	262	13.5	2725	2575	900	900
275/70R22.5	16	148/145M	T/L	8.25	958	275	14.5	3150	2900	900	900
275/80R22.5	18	149/146L	T/L	8.25	1012	276	16	3250	3000	900	900



MultiRoute EG811



- ▶ Special compound provides anti-wear performance and low heat build-up.
- ▶ Deep multi-blocks & tiny kerfs on the blocks provide outstanding driving force.
- ▶ Wide and deep tread provides longer mileage.

Size	PR	LI/SS	Tvne	Standard Rim	Overall Diameter (mm)	Section Width (mm)	Tread Depth (mm)	Load		Pressure	
								S(kg)	D(kg)	S(kPa)	D(kPa)
11R22.5	16	146/143K	T/L	8.25	1065	279	19.5	3000	2725	830	830
315/80R22.5	20	156/153L	T/L	9.00	1076	312	20	4000	3650	850	850



MultiRoute ES526



- ▶ Suitable for all position service.
- ▶ Optimal rib division provides an even load distribution and a good anti-irregular wear performance.
- ▶ Kerfs and shallow sculptures on the ribs help even the irregular wear and offer a strong grip.

Size	PR	LI/SS	Tvne	Standard Rim	Overall Diameter (mm)	Section Width (mm)	Tread Depth (mm)	Load		Pressure	
								S(kg)	D(kg)	S(kPa)	D(kPa)
8.25R16	16	128/124L	T/T	6.50H	855	235	11.5	1800	1600	770	770



MultiRoute **EG901**



- ▶ The unique anti-heat formula keeps tires at a suitable working temperature.
- ▶ Ultra-strong casing cords prevent the tire from deformation and maximize the loading ability.
- ▶ Specialized rubber and chemical ingredient are used to maximize the anti-wear performance.

Size	PR	LI/SS	T _{vne}	Standard Rim	Overall Diameter (mm)	Section Width (mm)	Tread Depth (mm)	Load		Pressure	
								S(kg)	D(kg)	S(kPa)	D(kPa)
11R22.5	16	146/143L	T/L	8.25	1054	279	16	3000	2725	830	830
12R22.5	18	152/149K	T/L	9.00	1096	300	18	3550	3250	930	930
13R22.5	18	154/151K	T/L	9.75	1124	320	18	3750	3450	830	830
295/80R22.5	18	152/149M	T/L	9.00	1044	298	17.5	3550	3250	900	900
315/80R22.5	20	156/153L	T/L	9.00	1076	312	17	4000	3650	850	850
11.00R20	18	152/149K	T/T	8.00	1085	293	15.5	3550	3250	930	930



MultiRoute **EA808**



- ▶ 3 grooves ensure good directional stability, even wear and smooth ride.
- ▶ Improved tread compound helps resist tearing and ensures good mileage.
- ▶ Optimized tread design provides low fuel consumption and silence driving.
- ▶ Good cost performance.

Size	PR	LI/SS	T _{vne}	Standard Rim	Overall Diameter (mm)	Section Width (mm)	Tread Depth (mm)	Load		Pressure	
								S(kg)	D(kg)	S(kPa)	D(kPa)
7.00R16	14	118/114L	T/T	5.50F	775	200	10	1320	1180	770	770
7.50R16	14	122/118L	T/T	6.00G	815	215	11.5	1500	1320	770	770



The MixWork Series

- Both on and off road with aggressive, uneven, or muddy road conditions.
- Heavy loads at medium to slow speeds and frequent stopping.

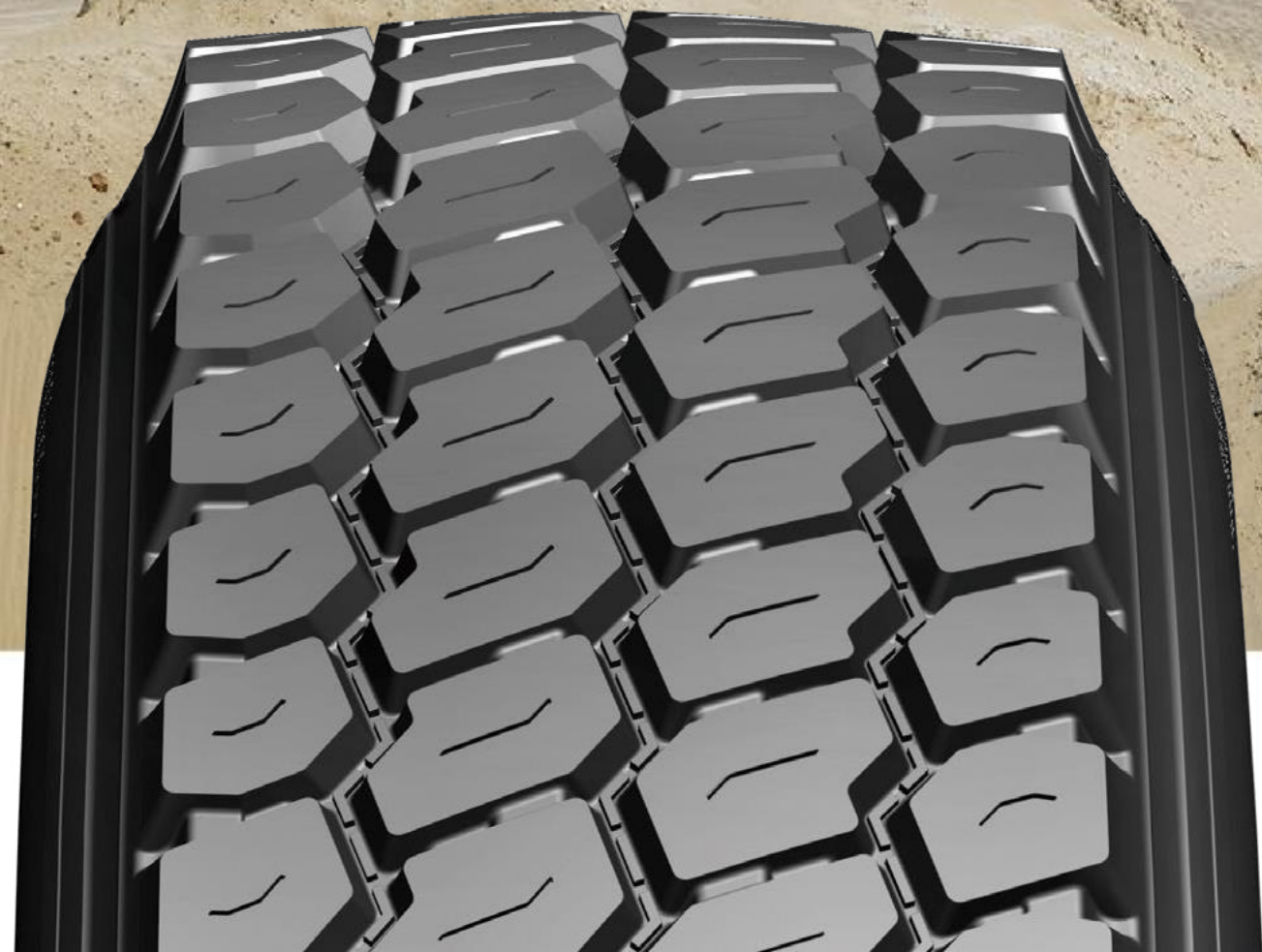


MixWork EAM637

EAM637 is an all-position tire perfect for on and off functions.



CONTROL TOUGHNESS LONGEVITY



MixWork EAM637



Features

Specialized rubber and chemical formula

Enhanced carcass structure

Optimized tread pattern design

Benefits

- ▶ Great resistance to shocks, bruises and penetrations
- ▶ Improves longevity and enhances retreadability
- ▶ Provides better traction and exceptional grip in soft soil and mud terrain conditions

Size

Size	PR	LI/SS	Type	Standard κmm	Overall Diameter (mm)	Section Width (mm)	Tread Depth (mm)	Load		Pressure	
								S(kg)	D(kg)	S(kPa)	D(kPa)
425/65R22.5	20	165K	T/L	12.25	1124	422	17.5	5150	/	830	/
445/65R22.5	20	169K	T/L	13.00	1150	444	17.5	5800	/	900	/

MixWork EDM60

EDM60 offers superior durability, traction and longevity in off-road conditions, as well as high mileage on-road.



CONTROL



TOUGHNESS



LONGEVITY



MiXWork EDM60



Features

- Directional deep tread design
- Optimized tread compound
- Integrated continuous tread blocks
- Enhanced bead and sidewall protection
- Robust 4-belt construction

Benefits

- Provides better traction and exceptional grip in rough terrain conditions
- Provides excellent protection against tread cuts and chips
- Provides excellent on- and off-road wear performance and extra tread durability
- Improves durability and increases tire damage resistance
- Protects tires from squirm and irregular wear to maximum retreadability and longevity

Size

Size	PR	LI/SS	Type	Standard κm	Overall Diameter (mm)	Section Width (mm)	Tread Depth (mm)	Load		Pressure	
								S(kg)	D(kg)	S(kPa)	D(kPa)
12R22.5	18	152/149K	T/L	9.00	1096	300	19.5	3550	3250	930	930
13R22.5	20	156/150J	T/L	9.75	1124	320	20	4000	3350	900	900
295/80R22.5	18	152/149K	T/L	9.00	1044	298	17.5	3550	3250	900	900
315/80R22.5	20	156/153K	T/L	9.00	1082	312	21	4000	3350	850	850



MixWork EDM629



- ▶ The deep lug pattern design contributes to outstanding performance on the severe road surface.
- ▶ High-strength carcass cords provide excellent durability performance.
- ▶ Thickened all-steel belt structure provides excellent anti-puncture performance.

Size	PR	LI/SS	Tvne	Standard Rim	Overall Diameter (mm)	Section Width (mm)	Tread Depth (mm)	Load		Pressure	
								S(kg)	D(kg)	S(kPa)	D(kPa)
* 7.50R16	14	122/118D	T/T	6.00G	815	215	12.5	1500	1320	770	770
8.25R16	18	128/124D	T/T	6.50H	865	235	20.5	1800	1600	770	770
* 8.25R20	16	139/137D	T/T	6.50	974	236	20	2430	2300	930	930
9.00R20	18	144/142D	T/T	7.00	1030	259	22	2800	2650	900	900
10.00R20	20	149/146D	T/T	7.50	1065	273	23.5	3250	3000	930	930
11.00R20	18	152/149D	T/T	8.00	1096	293	24	3550	3250	930	930
12.00R20	20	156/153D	T/T	8.50	1136	315	24	4000	3650	900	900

* New Size



MixWork EAM63



- ▶ The latest tread compound is used for outstanding mileage performance.
- ▶ A unique 4-ribbed zip-zag design provides outstanding handling for all-axle applications.
- ▶ The reinforced bead construction provides excellent structural durability to extend tire life.

Size	PR	LI/SS	Tvne	Standard Rim	Overall Diameter (mm)	Section Width (mm)	Tread Depth (mm)	Load		Pressure	
								S(kg)	D(kg)	S(kPa)	D(kPa)
315/80R22.5	20	156/153L	T/L	8.25	1076	312	17	4000	3650	850	850



MixWork EDM516



- ▶ Extra deep tread for long life and superior traction.
- ▶ Reinforced sidewall and bead design make sure the excellent loading ability.
- ▶ The optimized outline gives the tire great durability.

Size	PR	LI/SS	Tvne	Standard Rim	Overall Diameter (mm)	Section Width (mm)	Tread Depth (mm)	Load		Pressure	
								S(kg)	D(kg)	S(kPa)	D(kPa)
12.00R24	20	160/157F	T/T	8.50	1226	315	31	4500	4125	900	900



MixWork EDM515



- ▶ Aggressive block design provides great anti-chipping and anti-chunking ability.
- ▶ The advanced structure increases the surface rigidity and provides excellent protection for tread area.
- ▶ Extra reinforced bead filler ensures the outstanding anti-impact performance and loading capacity.

Size	PR	LI/SS	Tvne	Standard Rim	Overall Diameter (mm)	Section Width (mm)	Tread Depth (mm)	Load		Pressure	
								S(kg)	D(kg)	S(kPa)	D(kPa)
11R22.5	16	148/145G	T/L	8.25	1050	279	23.5	3150	2900	840	840
11R24.5	16	149/146G	T/L	8.25	1104	279	23.5	3250	3000	830	830
12R22.5	18	152/149G	T/L	9.00	1085	300	24	3550	3250	930	930
13R22.5	18	156/150G	T/L	9.75	1136	320	23.5	4000	3350	875	875
295/80R22.5	18	152/149J	T/L	9.00	1044	298	23.5	3550	3250	900	900
315/80R22.5	20	157/154G	T/L	9.00	1076	312	23.5	4125	3750	900	900

* New Size



MixWork EDM511



- ▶ Aggressive big and deep block pattern design provides excellent traction and grip on a rough road.
- ▶ Ultra-strength steel cord provides excellent durability
- ▶ Unique stone-ejector design in grooves helps to extend the tire life.

Size	PR	LI/SS	Tvne	Standard Rim	Overall Diameter (mm)	Section Width (mm)	Tread Depth (mm)	Load		Pressure	
								S(kg)	D(kg)	S(kPa)	D(kPa)
11R22.5	16	148/145J	T/L	8.25	1065	279	19	3150	2900	840	840
12R22.5	18	152/149K	T/L	9.00	1096	300	20.5	3550	3250	930	930
13R22.5	20	156/150J	T/L	9.75	1136	320	22	4000	3350	900	900
315/80R22.5	20	156/153K	T/L	9.00	1082	312	22	4000	3650	850	850



MixWork EA828G



- ▶ 3 zigzag design offers even wear resistance.
- ▶ Reinforced carcass and bead ensure excellent load.
- ▶ Special rubber tread formula offers excellent durability.

Size	PR	LI/SS	Tvne	Standard Rim	Overall Diameter (mm)	Section Width (mm)	Tread Depth (mm)	Load		Pressure	
								S(kg)	D(kg)	S(kPa)	D(kPa)
6.50R16	12	110/105L	T/T	5.50F	750	185	10.5	1060	925	670	670
10.00R20	18	149/146K	T/T	7.50	1054	278	15.5	3250	3000	930	930
11.00R20	18	152/149K	T/T	8.00	1085	293	16.5	3550	3250	930	930
12.00R20	22	158/155K	T/T	8.50	1125	315	17	4250	3875	970	970



MixWork EA828



- ▶ Optimized tread design adapts the tire to all axle positions and can be used in most of the road conditions.
- ▶ Specialized rubber formula in the shoulder utilizes the heat-releasing performance.
- ▶ The carcass structure minimizes the deformation and contributes to high durability.

Size	PR	LI/SS	Tvne	Standard Rim	Overall Diameter (mm)	Section Width (mm)	Tread Depth (mm)	Load		Pressure	
								S(kg)	D(kg)	S(kPa)	D(kPa)
11R22.5	16	148/145M	T/L	8.25	1054	279	15.3	3150	2900	840	840
11R24.5	16	149/146M	T/L	8.25	1104	279	16	3250	3000	830	830
12R22.5	18	152/148K	T/L	9.00	1084	300	16.50	3550	3150	850	850
13R22.5	18	154/150L	T/L	9.75	1124	320	16	3750	3350	850	850
295/80R22.5	18	152/149L	T/L	9.00	1044	298	17.5	3550	3250	900	900
315/80R22.5	20	156/153K	T/L	9.00	1076	312	14	4000	3650	850	850
7.00R16	14	118/114L	T/T	5.50F	775	200	11.5	1320	1180	770	770
7.50R16	14	122/118L	T/T	6.00G	805	215	12.5	1500	1320	770	770
8.25R16	16	128/124L	T/T	6.50H	855	235	12.5	1800	1600	770	770
8.25R20	16	139/137K	T/T	6.50	974	236	13.5	2430	2300	930	930
9.00R20	16	144/142K	T/T	7.00	1019	259	15	2800	2650	900	900
10.00R20	18	149/146K	T/T	7.50	1054	278	16	3250	3000	930	930



MixWork EA822



- ▶ All position tire for on and off road, construction and long carrying applications.
- ▶ Excellent in both steering and traction.
- ▶ Special groove geometry is designed to eliminate pattern damage and drain water.
- ▶ An outstanding high-speed performance.

Size	PR	LI/SS	Tvne	Standard Rim	Overall Diameter (mm)	Section Width (mm)	Tread Depth (mm)	Load		Pressure	
								S(kg)	D(kg)	S(kPa)	D(kPa)
12.00R24	20	160/157K	T/T	8.50	1226	315	15	4500	4125	900	900



MixWork ED628



- ▶ Excellent performance for a heavier work with better driving & braking ability, tear, cut and wear resistance.
- ▶ All position tires for the vehicles operating on on/off or paved road surface in short or medium distance.

Size	PR	LI/SS	Type	Standard Rim	Overall Diameter (mm)	Section Width (mm)	Tread Depth (mm)	Load		Pressure	
								S(kg)	D(kg)	S(kPa)	D(kPa)
9.5R17.5	18	143/141K	T/L	6.75	842	240	17	2725	2575	875	875
12R22.5	18	152/148K	T/L	9.00	1085	300	21	3550	3150	850	850
265/70R19.5	18	143/141K	T/L	7.50	867	262	15	2725	2575	900	900
315/80R22.5	20	157/154J	T/L	9.00	1076	312	18.5	4125	3750	900	900
7.50R16	14	122/118L	T/T	6.00G	815	215	12.5	1500	1320	770	770
8.25R16	16	128/124L	T/T	6.50H	865	235	15.5	1800	1600	770	770
8.25R20	16	139/137K	T/T	6.50	974	236	17	2430	2300	930	930
11.00R20	18	152/149K	T/T	8.00	1085	293	19.5	3550	3250	930	930
12.00R20	18	154/151K	T/T	8.50	1136	315	20.5	3750	3450	830	830
12.00R20	20	156/153K	T/T	8.5	1136	315	20.5	4000	3650	850	850
12.00R24	20	160/157K	T/T	8.50	1226	315	20	4500	4125	900	900



MixWork ED528



- ▶ Specially designed for on & off road use.
- ▶ Aggressive big blocks provide excellent traction on rough roads.
- ▶ Unique tread compounds resist chipping and chunking in rugged off-road conditions.

Size	PR	LI/SS	Type	Standard Rim	Overall Diameter (mm)	Section Width (mm)	Tread Depth (mm)	Load		Pressure	
								S(kg)	D(kg)	S(kPa)	D(kPa)
12.00R20	22	158/155D	T/T	8.50	1136	315	21	4250	3875	970	970
12.00R24	20	160/157K	T/T	8.50	1238	315	21.5	4500	4125	900	900

The Coach&Bus Series

- Transportation services such as charter, travel, commuting, and shuttle applications.
- Handling challenging road conditions, from long highway miles to tough city streets.





Coach&Bus EAC80



- ▶ Especially designed for coaches.
- ▶ Extra reinforced structure for the highest safety.
- ▶ Great controllability for long-distance people translocation application.

Size	PR	LI/SS	Tvne	Standard Rim	Overall Diameter (mm)	Section Width (mm)	Tread Depth (mm)	Load		Pressure	
								S(kg)	D(kg)	S(kPa)	D(kPa)
295/80R22.5	18	152/149M	T/L	9.00	1044	298	15	3550	3250	900	900



Coach&Bus EAU90



- ▶ Especially designed for urban bus.
- ▶ Great safety.
- ▶ Great control.

Size	PR	LI/SS	Tvne	Standard Rim	Overall Diameter (mm)	Section Width (mm)	Tread Depth (mm)	Load		Pressure	
								S(kg)	D(kg)	S(kPa)	D(kPa)
10R22.5	16	144/142L	T/L	7.50	1019	254	16.5	2800	2650	900	900



Coach&Bus EAU91



- ▶ Especially designed for urban bus.
- ▶ Extra reinforced structure for the highest safety.
- ▶ Great controllability for in-city people translocation application.

Size	PR	LI/SS	Tvne	Standard Rim	Overall Diameter (mm)	Section Width (mm)	Tread Depth (mm)	Load		Pressure	
								S(kg)	D(kg)	S(kPa)	D(kPa)
11R22.5	16	148/145J	T/L	8.25	1050	279	20	3150	2900	850	850
275/70R22.5	18	148/145J	T/L	8.25	958	276	20.5	3150	2900	900	900
305/70R22.5	18	152/150J	T/L	9.00	1000	305	20.5	3750	3350	830	830

SUTWER S.A.

Add: TREINTA Y TRES N° 1271 - URUGUAY

Tel: + 598 29160310

E-mail: info@sutwer.com

www.sutwer.com